



**Clients**

National and major energy companies

**Operating Areas**

3 countries in oil and gas producing regions worldwide

**History**

- ▶ Founded in 2014
- ▶ Reputation of innovative designs, high quality services, global installation resources and disciplined project execution

**Equipment & Services Offered**

- ▶ Helix Jetting Tool
- ▶ Helix Milling Tool
- ▶ Mud Motors
- ▶ Prospector Data Collection
- ▶ WITSML Data Aggregator
- ▶ WITSML Server Database
- ▶ MWD Logging
- ▶ Ditch Demon
- ▶ Ground Penetrating Radar & LiDar
- ▶ T2 & T3 Communication Systems
- ▶ Plant & Pipeline Commissioning
- ▶ Industrial Field Management Teams
- ▶ Safety & Quality Control Inspectors
- ▶ Process Safety Management
- ▶ Coaching & Mentoring
- ▶ Industrial Inspection Services
- ▶ Turnaround Services

**Strategic Alliances**

- ▶ Polaris Guidance
- ▶ GeoViz
- ▶ Pharos
- ▶ The Offshore Group
- ▶ GrupoMundi

**Global Remote Technologies** is dedicated to high-quality operations in every facet of the hydrocarbon market. Our approach is one of thorough, detailed analysis and delivery of turnkey proprietary technology to solve problems in upstream, midstream and downstream processes.

**GRT** has licensed and purchased multiple patent pending tools that are currently being deployed in the U.S., Canada and Mexico. Utilizing our advanced engineering and leadership experience, GRT brings innovative processes and technologies to the oil patch through its primary products

**PRODUCTS:**

**Upstream Products**

**Prospector:** GRT's wireless data collection system provides end users with remote monitoring for critical equipment from anywhere and anytime.

**Helix Tool:** A breakthrough design in well stimulation, the Helix Jetting Tool provides efficiency and reliability throughout cleaning processes with the Company's patented helical patterned jets.

**Drilling Motors:** GRT offers an extensive line of down-hole mud motors durably built to undertake diverse drilling environments and procedures.

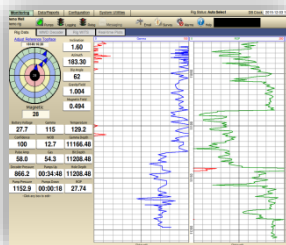
**WITSML Solutions:** GRT's WITSML Data Aggregator and the WITSML Server are a customized data logging system built on the industries next generation platforms. These systems amasses and centrally stores information from field locations and rig sites.

**MWD Logging: (Measurement While Drilling)** is part of the vital information compiled by GRT and sent to the cloud so it can be monitored from remote locations.

**Ditch Demon:** Inspired by aerospace technology, the tool is engineered to collect particles in the mud column while drilling, protecting pumps and improving the drilling process.

**Kestrel:** GRT's technical staff deploys aerial photography, ground penetrating radar and LiDar technology to gather information above, at, and below ground level to create a complete situational awareness scenario for the customer.

**T-2 & T-3 Communication Systems:** Clients can maintain connectivity with the compact T-2 & T-3 portable communication packages, which uses alternative energy sources power the device.





**Advanced Technology  
and Real World Experience**

- ▼ Canada
- ▼ Mexico
- ▼ United States

**FINANCIALS**

- ▶ Symbol - RGT (Canadian Securities Exchange)
  - ISIN - CA37809L1085
- ▶ Symbol - GR9 (Frankfurt Stock Exchange)
  - WKN - A14TJB

**Canadian Securities Exchange Stats**

Share Price	0.22
Common Shares	42,061,338
Warrants Reserved	5,956,705
Total Shares Outstanding	48,018,043
Market Capitalization	
52 Week High	0.30
52 Week Low	0.10
Approx. Float	N/A

**Frankfurt Stock Exchange Stats**

Share Price	0.17
52 Week High	0.183
52 Week Low	0.078

**Projected Revenue**

Year 1	\$2,179,500
Year 2	\$5,426,250
Year 3	\$9,604,500
Year 4	\$14,994,750

**LEADERSHIP**

- Chris Dorris**  
Chief Executive Officer and Chairman of the Board
- Kane Smith**  
President and Director
- Richard C. Weiner**  
Chief Financial Officer
- Lt. Col. (Ret.) Joe Becker**  
Director

**CONTACT**

**Canada (Corporate Office)**  
355 Burrard Street, Suite 1000  
Vancouver, BC V6C 2G8  
(+1) 888.381.3222

**Houston**  
21617 Rhodes Road  
Spring, TX 77388  
(+1) 888.381.3222

**Colorado**  
8123 S Interport Blvd, Suite A  
Englewood, CO 80112  
(+1) 888.381.3222

**Investor Relations**  
info@grtcse.com

**Business Development**  
info@grtcse.com

**SERVICES:**

**Downstream Services**

**Commissioning:** GRT staff verifies operations comply with design specifications. Company engineers remain on site until project completion, regardless of project duration.

**Industrial Resources:** GRT's staff of writers, operators, and technicians help to support client facilities either in the field as part of a management team or as individual personnel attachment in every stage of downstream operation from design to implementation.

**Plant Inspections:** GRT's certified specialists in quality and safety help to ensure plant turnarounds, maintenance, or shutdown inspections happen smoothly and efficiently.

**Plant Turnarounds:** GRT's trained teams coordinate turnaround or shutdown operations during critical events and ensure every step in the process is accurately executed.

**Process Safety Management:** GRT experts can create, maintain, and manage a comprehensive process safety management program, or support a client's existing program to ensure compliance with OSHA standards.

**Coaching and Mentoring:** Operators new to their career are paired with veteran industry consultants in a program that creates a thorough training environment to produce versed operators in the industry.

**Midstream Services**

**Commissioning:** Commissioning services are tailored to meet clients' individual project needs according to pipeline materials and location.

**Pipeline Management Resources:** GRT's staff of writers, operators, and technicians help to support client's operations either in the field as part of a management team or as individual personnel attachment in every stage of midstream operation from design to implementation.

**Professional Staff Capabilities:** Complete midstream projects faster with direct support from GRT's certified inspectors and specialists. The Company's personnel verify and monitor safety and quality during construction or repair of piping, tanks, and more.

**Pipeline Safety Professionals:** GRT's safety support services helps clients keep midstream projects on schedule and ensures pipeline construction or repairs meet industry safety standards.

