



Corporate Presentation | July 2015



GLOBAL
REMOTE
TECHNOLOGIES LTD.

GRT is a publicly traded Canadian
company with offices in Denver CO,
Houston TX, Vancouver BC, and
Mexico City

[CNSX:RGT](#)



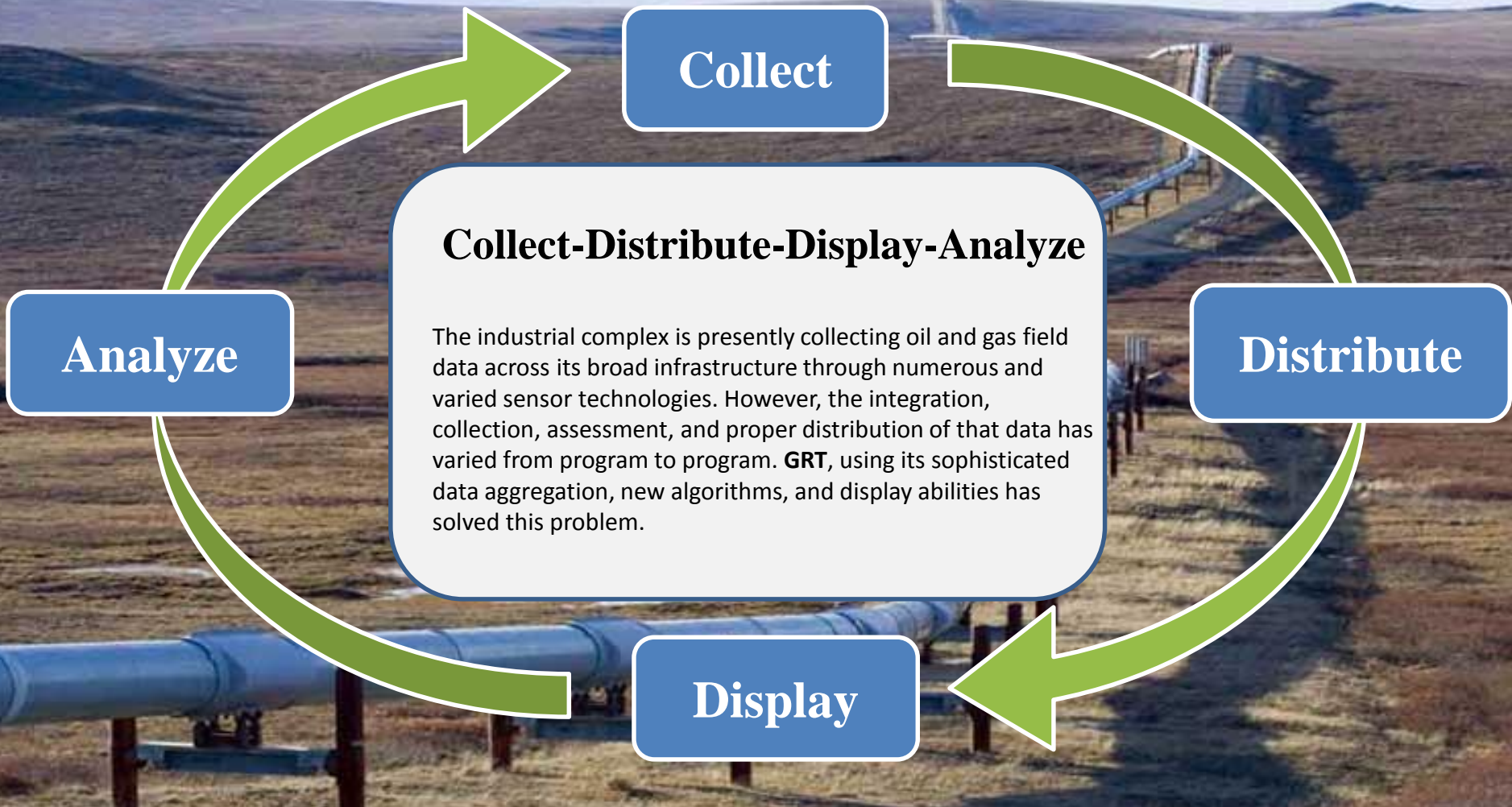


- ❖ **Global Remote Technologies (GRT)** specializes in oil and gas remote sensing and data aggregation. Prospector integrates with existing sensor information, if available, adds sensors when missing, and transmits telemetry from pipeline, drilling, and production sites to a central server where it is viewed in Prospector web interface (viewer).
- ❖ The system is designed to provide key personnel with early warnings to avoid disasters while lowering NPT (non-productive time) and response time. Prospector provides vital information for equipment status, storage tanks, pipelines, exploration, production, and the transmission of oil, gas, and water.
- ❖ Global Remote Technologies (GRT) is a publicly traded Canadian company with offices in Denver CO, Houston TX, Vancouver BC, and Mexico City [CNSX:RGT](https://www.cnsx.com/quote/rgt)





Product Overview





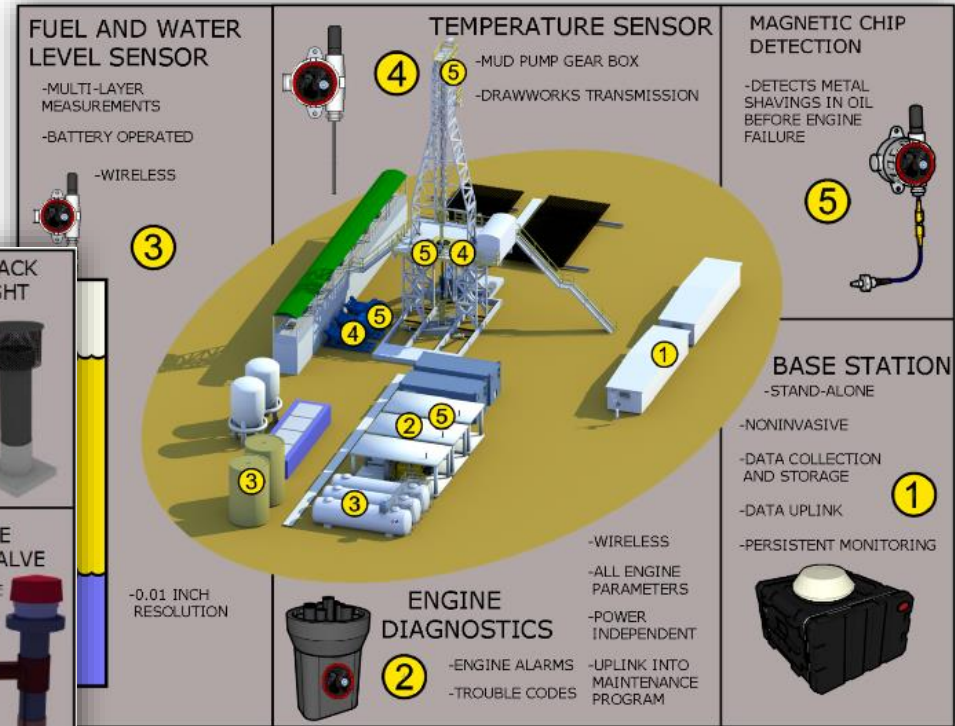
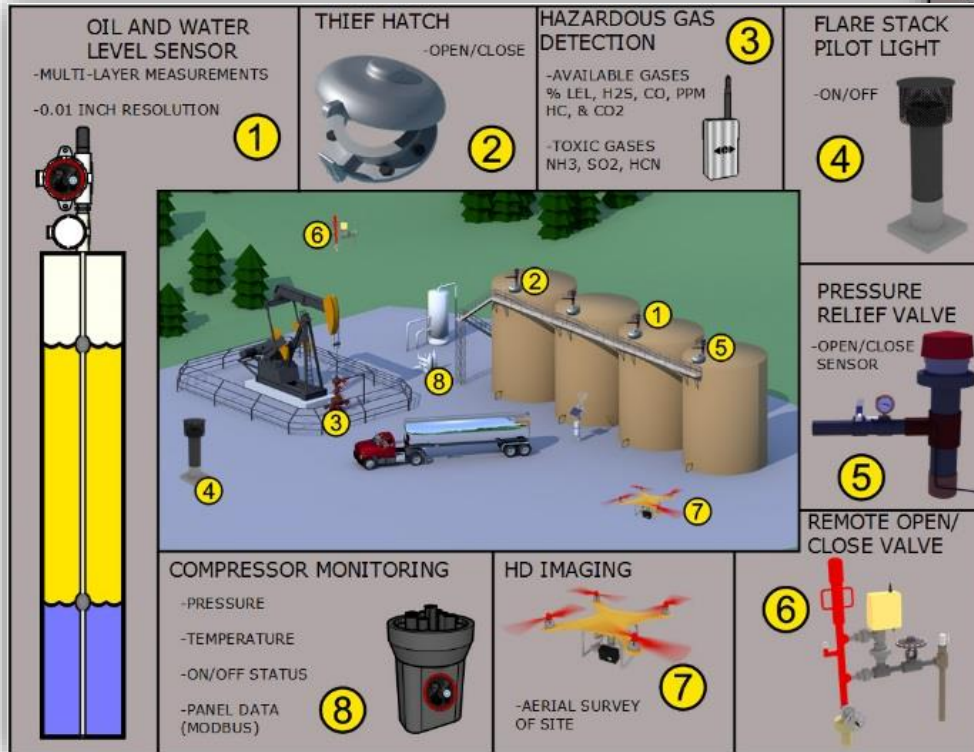
Data Aggregation

GRT uses a wireless-sensor based, persistent monitoring, and data aggregation technology (**Prospector**). It combines real-time critical monitoring of multiple sensors for fluid levels, temperatures, engines, safety equipment, and compliance sensors in one package. This information is collected and exported offsite to a centralized server where it is processed and viewed using a web-based interface.

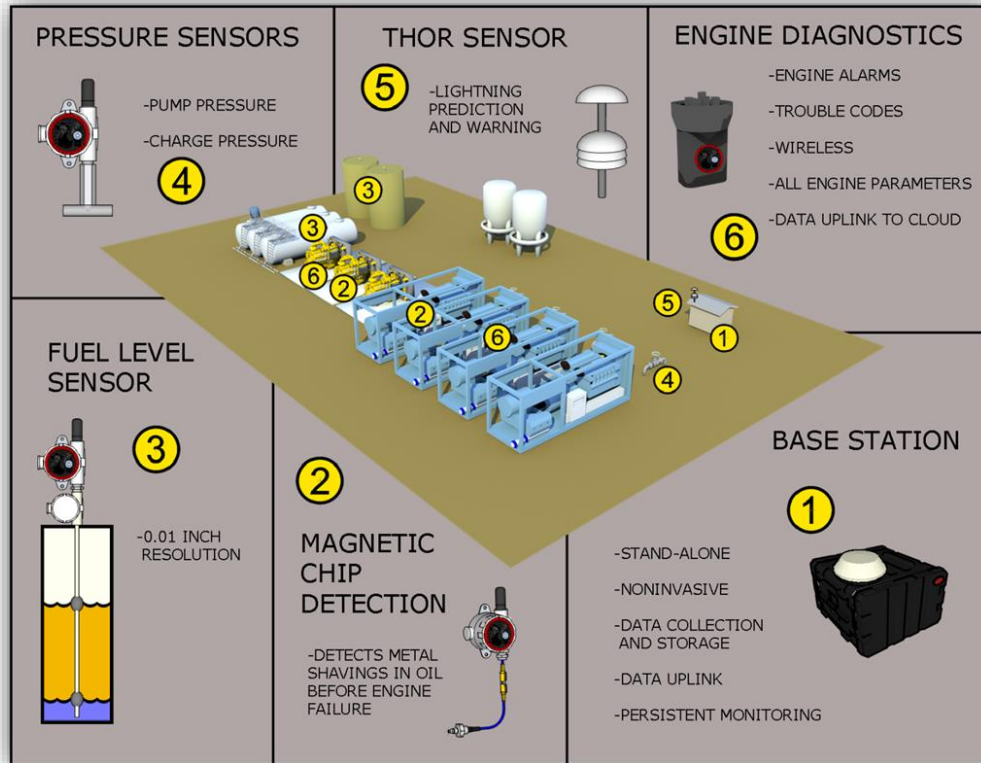




Production

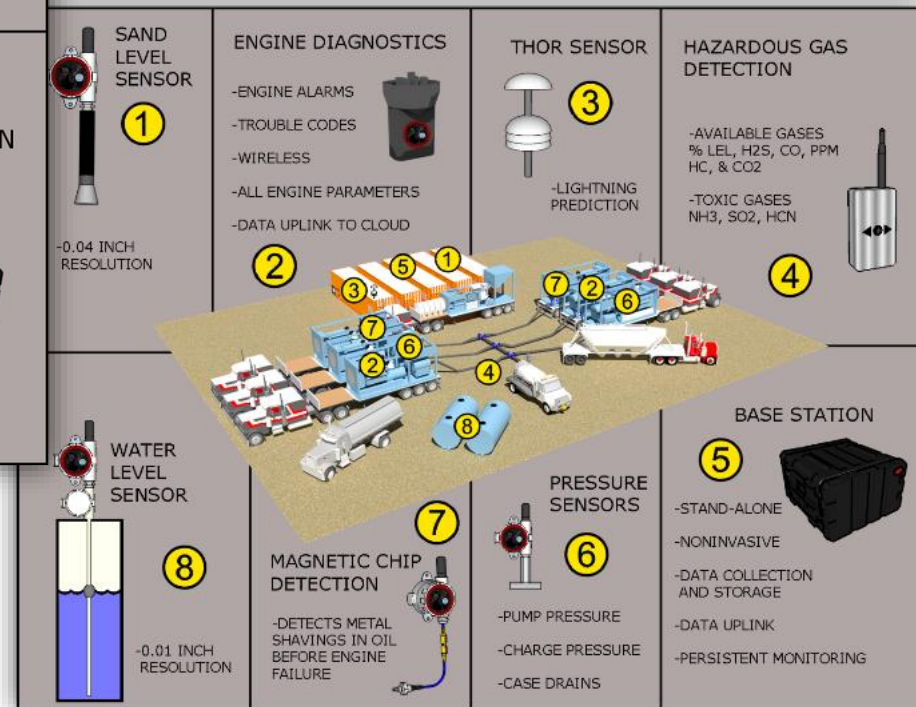


Drilling



Compressor

Fracking





Site Mapping

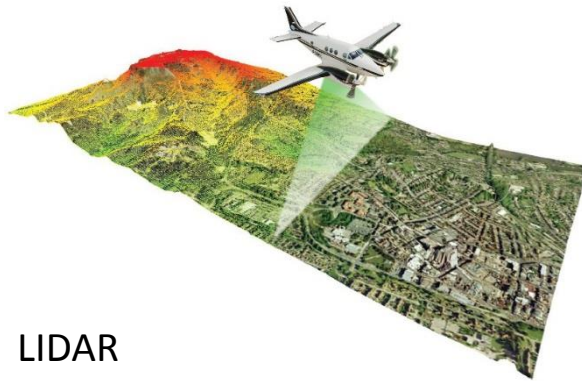
GRT deploys a sophisticated site mapping system (**Kestrel**) that combines compact hyperspectral, multispectral, and high-resolution digital imaging systems suitable for light aircraft, helicopters, and UAVs. This information is displayed in the Prospector web viewer.



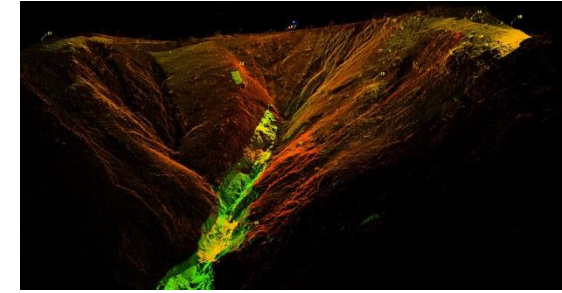
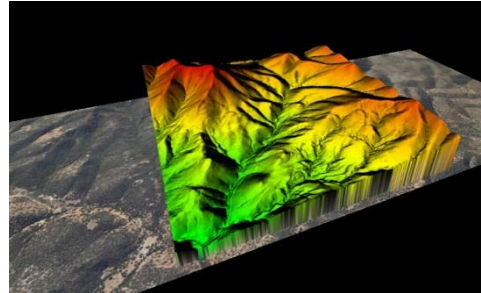


Kestrel

Airplane mounted equipment provides Kestrel with the ability to analyze very large areas with ease for:



- LIDAR
- HD Imaging
- ROW surveying
- Large Field/City Mapping
- Pipeline Locating
- Project Tracking

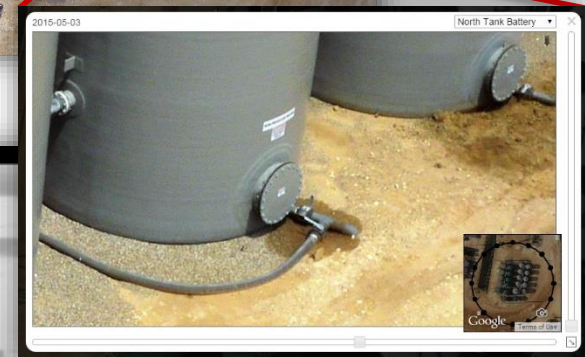




Kestrel

UAV mounted equipment provides Kestrel with the ability to analyze local areas with ease. GRT uses this analysis for:

- Site Imaging HD
- Compliance Violations
- Leak detection
- Corrosion Detection
- IR Emissions
- Thermal





Data Display

The **Prospector** web interface is the primary method used to access the aggregated live data. This user-friendly, web-based interface provides real-time intuitive access to the status of your valuable assets.



Web Interface



GUARDIAN

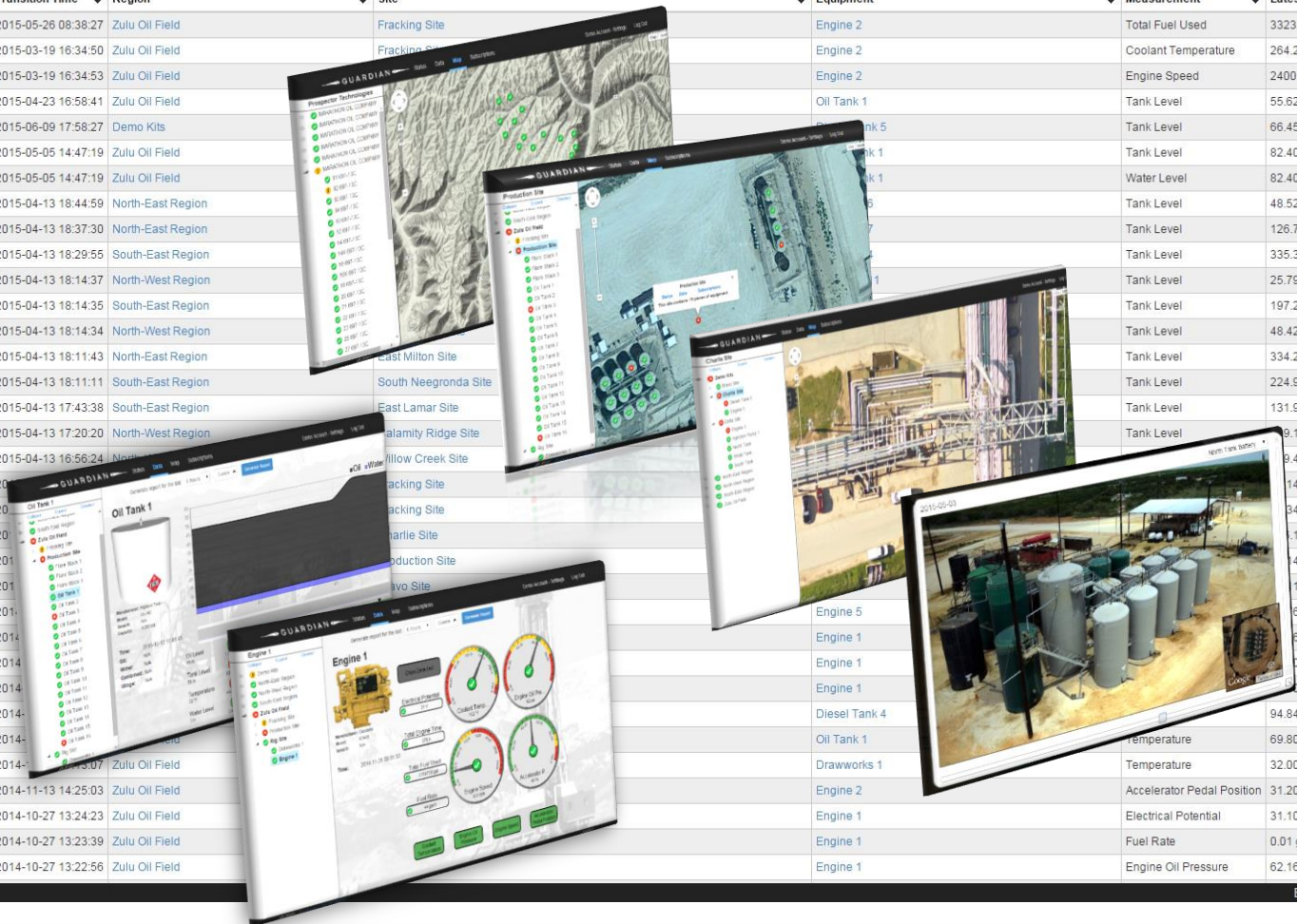
Status Data Map Subscriptions

Demo Account - Settings Log Out

New Frontier Global

Severity	Transition Time	Region	Site	Equipment	Measurement	Latest Value
1	2015-05-26 08:38:27	Zulu Oil Field	Fracking Site	Engine 2	Total Fuel Used	3323302 gal
2	2015-03-19 16:34:50	Zulu Oil Field	Fracking Site	Engine 2	Coolant Temperature	264.20 °F
3	2015-03-19 16:34:53	Zulu Oil Field	Fracking Site	Engine 2	Engine Speed	2400.0 rpm
4	2015-04-23 16:58:41	Zulu Oil Field	Demo Kits	Oil Tank 1	Tank Level	55.62 in
5	2015-06-09 17:58:27	Zulu Oil Field	Demo Kits	Oil Tank 5	Tank Level	66.45 in
6	2015-05-05 14:47:19	Zulu Oil Field	Demo Kits	Oil Tank 1	Tank Level	82.40 in
7	2015-05-05 14:47:19	Zulu Oil Field	Demo Kits	Oil Tank 1	Water Level	82.40 in
8	2015-04-13 18:44:59	North-East Region	Demo Kits	Oil Tank 1	Tank Level	48.52 in
9	2015-04-13 18:37:30	North-East Region	Demo Kits	Oil Tank 1	Tank Level	126.78 in
10	2015-04-13 18:29:55	South-East Region	Demo Kits	Oil Tank 1	Tank Level	335.32 in
11	2015-04-13 18:14:37	North-West Region	Demo Kits	Oil Tank 1	Tank Level	25.79 in
12	2015-04-13 18:14:35	South-East Region	Demo Kits	Oil Tank 1	Tank Level	197.21 in
13	2015-04-13 18:14:34	North-West Region	Demo Kits	Oil Tank 1	Tank Level	48.42 in
14	2015-04-13 18:11:43	North-East Region	Demo Kits	Oil Tank 1	Tank Level	334.29 in
15	2015-04-13 18:11:11	South-East Region	Demo Kits	Oil Tank 1	Tank Level	224.91 in
16	2015-04-13 17:43:38	South-East Region	Demo Kits	Oil Tank 1	Tank Level	131.99 in
17	2015-04-13 17:20:20	North-West Region	Demo Kits	Oil Tank 1	Tank Level	9.13 in
18	2015-04-13 16:56:24	North-West Region	Demo Kits	Oil Tank 1	Tank Level	9.44 in
19	2015-04-13 16:56:24	North-West Region	Demo Kits	Oil Tank 1	Tank Level	14 gal/h
20	2015-04-13 16:56:24	North-West Region	Demo Kits	Oil Tank 1	Tank Level	34 psi
21	2015-04-13 16:56:24	North-West Region	Demo Kits	Oil Tank 1	Tank Level	14 °F
22	2015-04-13 16:56:24	North-West Region	Demo Kits	Oil Tank 1	Tank Level	4 in
23	2015-04-13 16:56:24	North-West Region	Demo Kits	Oil Tank 1	Tank Level	1 psi
24	2015-04-13 16:56:24	North-West Region	Demo Kits	Oil Tank 1	Tank Level	6 psi
25	2015-04-13 16:56:24	North-West Region	Demo Kits	Oil Tank 1	Tank Level	60 °F
26	2015-04-13 16:56:24	North-West Region	Demo Kits	Oil Tank 1	Tank Level	90 rpm
27	2015-04-13 16:56:24	North-West Region	Demo Kits	Oil Tank 1	Tank Level	0 %
28	2015-04-13 16:56:24	North-West Region	Demo Kits	Oil Tank 1	Tank Level	94.84 in
29	2015-04-13 16:56:24	North-West Region	Demo Kits	Oil Tank 1	Tank Level	69.80 °F
30	2015-04-13 16:56:24	North-West Region	Demo Kits	Oil Tank 1	Tank Level	32.00 °F
31	2015-04-13 16:56:24	North-West Region	Demo Kits	Oil Tank 1	Tank Level	31.20 %
32	2015-04-13 16:56:24	North-West Region	Demo Kits	Oil Tank 1	Tank Level	31.10 V
33	2015-04-13 16:56:24	North-West Region	Demo Kits	Oil Tank 1	Tank Level	0.01 gal/h
34	2015-04-13 16:56:24	North-West Region	Demo Kits	Oil Tank 1	Tank Level	62.16 psi

- Threat Board
- Mapping
- Sensor Data
- Personnel
- Alarms/Alerts
- Hazards



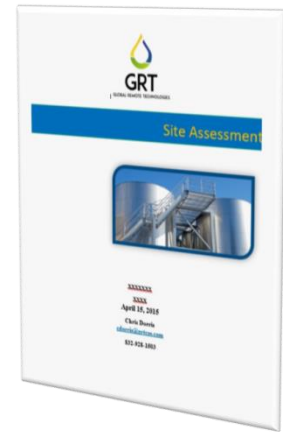
© 2015 - Global Remote Technologies

English



Analyze

GRT performs a comprehensive assessment using the collected data, leak detection equipment, and a ground-level physical inspection. Using information gathered from the site, a corrective action plan is generated laying out recommendations for improvement.





Company: Google.com									
Last updated at: Wednesday, September 26, 2012 10:22:38 PM									
<div> <div> 1 2 3 4 5 6 7 8 9 10 </div> <div> Document Search WebSite Value </div> </div>									
<div> <div> Show 10 25 50 100 250 500 1000 </div> <div> Search Filter Reset </div> </div>									
<div> <div> Show 10 25 50 100 250 500 1000 </div> <div> Search Filter Reset </div> </div>									
id	url	source	email	first name	last name	company	location	status	last login
1000000001	http://www.google.com	Google	adrian@adrianadrian.com	Adrian	Comas	UNIVERSITAT
1000000002	http://www.google.com	Google	brandon@brandonbrandon.com	Brandon	Brady	INTECATION
1000000003	http://www.google.com	Google	bradley@bradleybradley.com	Bradley	Mathys	DEBUP
1000000004	http://www.google.com	Google	bradley@bradleybradley.com	Bradley	Marguery	DEBILIGHT
1000000005	http://www.google.com	Google	bradley@bradleybradley.com	Bradley	Brown
1000000006	http://www.google.com	Google	bradley@bradleybradley.com	Bradley	Santa	CALIFORNIA
1000000007	http://www.google.com	Google	bradley@bradleybradley.com	Bradley	Crang	DEBILIGHT
1000000008	http://www.google.com	Google	bradley@bradleybradley.com	Bradley	Mathys	EXTREME
1000000009	http://www.google.com	Google	bradley@bradleybradley.com	Bradley	Mathys	DEBILIGHT
1000000010	http://www.google.com	Google	bradley@bradleybradley.com	Bradley	Mathys	DEBILIGHT
1000000011	http://www.google.com	Google	bradley@bradleybradley.com	Bradley	Mathys	DEBILIGHT
1000000012	http://www.google.com	Google	bradley@bradleybradley.com	Bradley	Mathys	DEBILIGHT
1000000013	http://www.google.com	Google	bradley@bradleybradley.com	Bradley	Mathys	DEBILIGHT
1000000014	http://www.google.com	Google	bradley@bradleybradley.com	Bradley	Mathys	DEBILIGHT
1000000015	http://www.google.com	Google	bradley@bradleybradley.com	Bradley	Mathys	DEBILIGHT
1000000016	http://www.google.com	Google	bradley@bradleybradley.com	Bradley	Mathys	DEBILIGHT
1000000017	http://www.google.com	Google	bradley@bradleybradley.com	Bradley	Mathys	DEBILIGHT
1000000018	http://www.google.com	Google	bradley@bradleybradley.com	Bradley	Mathys	DEBILIGHT
1000000019	http://www.google.com	Google	bradley@bradleybradley.com	Bradley	Mathys	DEBILIGHT
1000000020	http://www.google.com	Google	bradley@bradleybradley.com	Bradley	Mathys	DEBILIGHT
1000000021	http://www.google.com	Google	bradley@bradleybradley.com	Bradley	Mathys	DEBILIGHT
1000000022	http://www.google.com	Google	bradley@bradleybradley.com	Bradley	Mathys	DEBILIGHT
1000000023	http://www.google.com	Google	bradley@bradleybradley.com	Bradley	Mathys	DEBILIGHT
1000000024	http://www.google.com	Google	bradley@bradleybradley.com	Bradley	Mathys	DEBILIGHT
1000000025	http://www.google.com	Google	bradley@bradleybradley.com	Bradley	Mathys	DEBILIGHT
1000000026	http://www.google.com	Google	bradley@bradleybradley.com	Bradley	Mathys	DEBILIGHT
1000000027	http://www.google.com	Google	bradley@bradleybradley.com	Bradley	Mathys	DEBILIGHT
1000000028	http://www.google.com	Google	bradley@bradleybradley.com	Bradley	Mathys	DEBILIGHT
1000000029	http://www.google.com	Google	bradley@bradleybradley.com	Bradley	Mathys	DEBILIGHT
1000000030	http://www.google.com	Google	bradley@bradleybradley.com	Bradley	Mathys	DEBILIGHT
1000000031	http://www.google.com	Google	bradley@bradleybradley.com	Bradley	Mathys	DEBILIGHT
1000000032	http://www.google.com	Google	bradley@bradleybradley.com	Bradley	Mathys	DEBILIGHT
1000000033	http://www.google.com	Google	bradley@bradleybradley.com	Bradley	Mathys	DEBILIGHT
1000000034	http://www.google.com	Google	bradley@bradleybradley.com	Bradley	Mathys	DEBILIGHT
1000000035	http://www.google.com	Google	bradley@bradleybradley.com	Bradley					





Commissioning Pipelines

Commissioning services are tailored to meet clients' individual project needs according to pipeline materials and location.

Industrial Resources

GRT's staff of writers, operators, and technicians help to support client facilities either in the field as part of a management team or as individual personnel attachment in every stage of midstream operation from design to implementation.





Professional Staff Capabilities

Complete midstream projects faster with direct support from GRT's certified inspectors and specialists. GRT's personnel monitor and verify safety and quality during construction or repair of piping, tanks, and more.

Pipeline Safety Professionals

GRT's safety support services helps clients keep midstream projects on schedule and ensures pipeline construction or repairs meet industry safety standards.





Commissioning Plants

GRT staff verifies operations comply with design specifications. GRT engineers remain on site until project completion, regardless of project duration.

Industrial Resources

GRT's staff of writers, operators, and technicians help to support client facilities either in the field as part of a management team or as individual personnel attachment in every stage of downstream operation from design to implementation.



Downstream Operations



Coaching and Mentoring

Operators new to their career are paired with veteran industry consultants in a program that creates a thorough training environment to produce versed operators in the industry.

Process Safety Management

GRT experts can create, maintain, and manage a comprehensive process safety management program, or support a client's existing program to ensure compliance with OSHA's Process Safety Management 29 CFR 1910.119 (PSM) Mechanical Integrity Directive.





Refinery Inspection

GRT's certified specialist in quality and safety help to ensure plant turnarounds, maintenance, or shutdown inspections happen smoothly and efficiently.

Turnaround Services

GRT's trained teams coordinate turnaround or shutdown operations during critical events and ensure every step in the process is accurately executed.





Partners/Associates



How does the GRT team benefit our customers?

- ❖ Gathering, analyzing, and rapidly disseminating data to the right person.
- ❖ Giving an increased capability to understand and respond to internal and external risks to its assets, both human and material, in real time.
- ❖ Providing the customer with a dedicated data collection, analysis, and distribution center that delivers actionable information to the right people 24/7.
- ❖ Providing Subject Matter Experts to the customer from our knowledgeable staff with deep roots in energy exploration, production, and distribution.

Global Remote Technologies (GRT) is a publicly traded Canadian company with offices in Denver CO, Houston TX, and Vancouver BC. [CNSX:RGT](#) / [FRA:GR9](#)



**GLOBAL
REMOTE
TECHNOLOGIES LTD.**

CANADA

Suite 1000 -355 Burrard Street
Vancouver, BC, V6C 2G8
Telephone: 888-381-3222
Investor Inquiries: info@grtcse.com

UNITED STATES

21617 Rhodes Rd
Spring, TX 77388
Telephone: 888-381-3222
Investor Inquiries: info@grtcse.com